

High Heat Grease

No Ordinary Grease

SWEPCO High Heat Grease 104 is a premium quality multi-purpose high pressure grease with excellent thermal and chemical stability. It is especially formulated to provide superior lubrication under a variety of demanding operating conditions, including severe temperature extremes, heavy loads and abnormal exposure to moisture.

The broad range of protection provided by SWEPCO 104 makes it a superior multi-purpose lubricant, satisfying the requirements of at least five common gun grease applications and many special applications as well. By eliminating the need for stocking a variety of greases for specialized applications, SWEPCO 104 saves users money, as well as reducing the risk of misapplication of lubricants. These two features, superior lubrication and broad range application, provide users with true lubrication economy.

Protects Equipment At High Temperatures

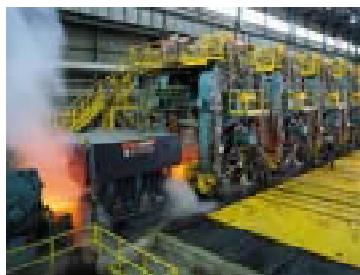
SWEPCO 104 has been carefully formulated to withstand the demanding lubrication requirements of high heat applications. It's a careful blend of the



SWEPCO High Heat Grease 104 is especially formulated for superior lubrication under a wide range of high temperature applications.

finest quality high viscosity refined oil and a non-melt gelling agent, a combination which provides the finished lubricant with both high temperature resistance and high film strength. This unique combination prevents the lubricant from separating and flowing at high temperatures and protects it from the effects of oxidation which destroy the effectiveness of conventional greases.

SWEPCO 104 provides safe, dependable lubrication at constant temperatures up to 350°F. (177° C) and



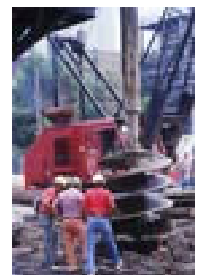
High Heat Applications



High Shock



Extreme pressure



Water Exposure

PERFORMANCE

intermittent temperatures up to 500° F. (260° C). It's dropping point in ASTM D-2265 laboratory tests repeatedly demonstrates the high temperature stability of this grease. It is especially recommended for use in high temperature industrial applications where many sodium, calcium or lithium-base greases are unsatisfactory. Field experience has proven SWEPCO 104 particularly effective in the lubrication of chains, sleeve bearings, gear bearings, conveyor bearings and car bearings of kilns, ovens and similar equipment operating at elevated temperatures.

Superior Lubrication At Subzero Temperatures, Too

Cold temperature performance is also excellent. SWEPCO 104 does not thicken excessively at low temperatures. It maintains its pumpability and continues to provide superior lubrication down to its recommended low temperature limit of -30° F. (-34° C).

Won't Get "Pounded Out" During Severe Service

SWEPCO 104 also has outstanding high pressure characteristics. It isn't readily "pounded out" during severe service. Its high shock resistance, shear stability and high film strength mean it "stays put" to provide consistent, uniform lubrication even under constant slamming, heavy pounding or extreme loading.

Exceptional Water Resistance

SWEPCO 104 has unusually high resistance to water. It simply won't "wash out." It resists the washing action of water and stays put on friction bearing surfaces, providing reliable lubrication.

This feature provides superior performance in damp or wet areas and for applications which require resistance to moisture, such as chassis, fifth wheel and water pump lubrication.

Especially Well Suited To A Wide Range Of Applications

Because of its superior high and low temperature performance, wear protection and water resistance, SWEPCO 104 is recommended for a wide range of applications including these common uses:

- As a high speed bearing grease, it completely covers the bearing surfaces, providing a heat resistant shield which protects the bearings both during operation and idle periods.
- As a universal joint grease, it helps prevent corrosion and wear, as well as guarding against shock loads.
- As a chassis grease, its adhesive characteristics and resistance to water and dirt assure superior performance.
- As a water pump grease, it penetrates water down to the metal without thinning, assuring proper lubrication.
- As a fifth wheel grease, it is able to withstand high pressures, heavy shock loads and constant exposure to water.

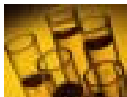
Use SWEPCO High Heat Grease 104 with total confidence anywhere superior lubrication is required.

Typical Physical Characteristics

NLGI Consistency	#1	#2
Penetration, @77 °F, ASTM D-217	330	280
Dropping Point, °F, ASTM D-2265	Non-Melt	
Base Oil Viscosity, cst @40°C	130.9	344.8
Base Oil Viscosity, cst @100°C	13.3	25.3
Color	Amber	
Texture	Buttery	

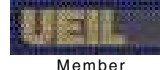
Typical Performance Characteristics

Timken OK Load	35
4-Ball Wear Test, Scar Diameter, mm ASTM D-2266 ..	0.60
Rust Test, ASTM D-1743	1
Oxidation Test, ASTM D-942	
PSI Loss @ 100 HRS, Max	4
PSI Loss @ 500 HRS, Max	16
Optimum Operating Temperature Range	
°F (°C)	-30 to +350 (-34 to +177)



A Product of SPX Technology™.

... the cutting edge performance SWEPCO Customers have come to expect.



Southwestern Petroleum Lubricants, LLC

Fort Worth, Texas Phone: (817)332-2336 Fax: (800)736-5823 Web: www.swepcolube.com